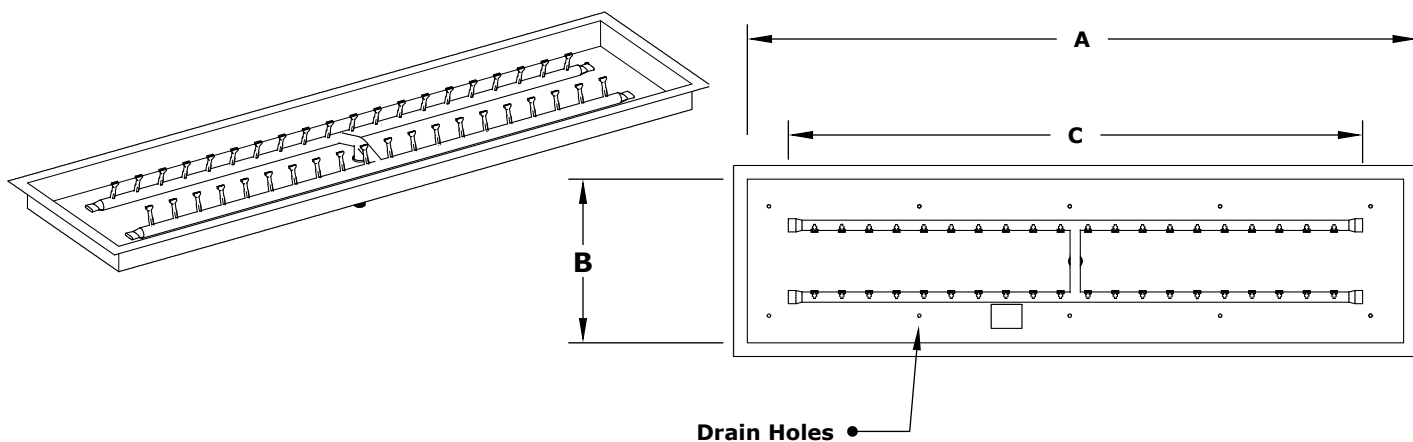
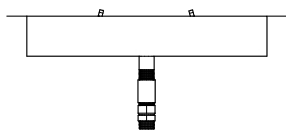


RECTANGULAR DROP IN PAN & H BULLET BURNER MATCH LIT IGNITION

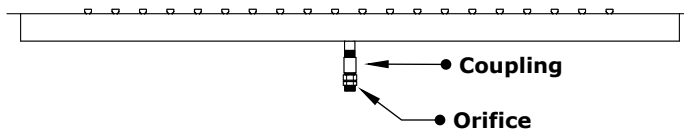


ISOMETRIC VIEW

TOP VIEW



RIGHT SIDE VIEW



FRONT SIDE VIEW

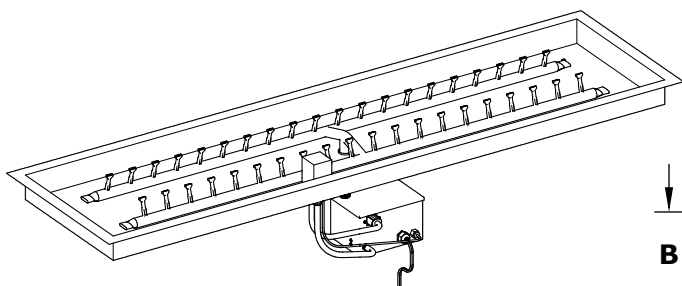
| Brass | Stainless Steel | A | B | C | D | INLET | BTU |
|--------------|-----------------|-----|----|---------|----|-------|---------|
| OPT-BP1224RD | OPT-BP1224RDSS | 24" | 8" | 18" | 6" | 1/2" | 85,000 |
| OPT-BP1236RD | OPT-BP1236RDSS | 36" | 8" | 24" | 6" | 1/2" | 110,000 |
| OPT-BP1248RD | OPT-BP1248RDSS | 48" | 8" | 36" | 6" | 1/2" | 160,000 |
| OPT-BP1260RD | OPT-BP1260RDSS | 60" | 8" | 48" | 6" | 1/2" | 205,000 |
| OPT-BP1272RD | OPT-BP1272RDSS | 72" | 8" | 60" (M) | 6" | 3/4" | 255,000 |
| OPT-BP1284RD | OPT-BP1284RDSS | 84" | 8" | 72" (M) | 6" | 3/4" | 300,000 |
| OPT-BP1296RD | OPT-BP1296RDSS | 96" | 8" | 84" (M) | 6" | 3/4" | 350,000 |

Pan Material: Aluminum
Burner Material: Brass / Stainless Steel
Ignition Type: Match Lit

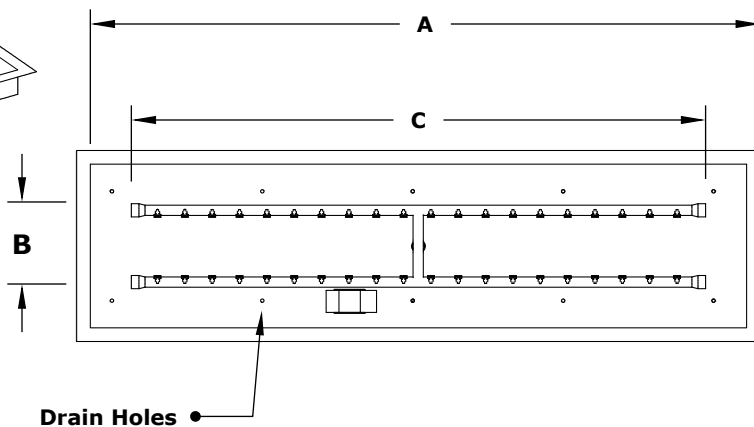
Includes: Pan, Burner, Electronic Valve.

M = Manifold

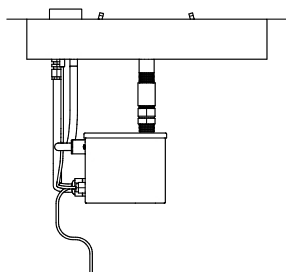
RECTANGULAR DROP IN PAN & H BULLET BURNER 12V ELECTRONIC IGNITION



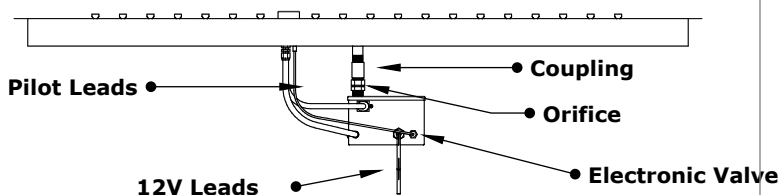
ISOMETRIC VIEW



TOP VIEW



RIGHT SIDE VIEW



FRONT SIDE VIEW

| Brass | Stainless Steel | A | B | C | D | INLET | BTU |
|-----------------|-------------------|-----|----|---------|----|-------|---------|
| OPT-BP1224RDE12 | OPT-BP1224RDSSE12 | 24" | 8" | 18" | 6" | 1/2" | 85,000 |
| OPT-BP1236RDE12 | OPT-BP1236RDSSE12 | 36" | 8" | 24" | 6" | 1/2" | 110,000 |
| OPT-BP1248RDE12 | OPT-BP1248RDSSE12 | 48" | 8" | 36" | 6" | 1/2" | 160,000 |
| OPT-BP1260RDE12 | OPT-BP1260RDSSE12 | 60" | 8" | 48" | 6" | 1/2" | 205,000 |
| OPT-BP1272RDE12 | OPT-BP1272RDSSE12 | 72" | 8" | 60" (M) | 6" | 3/4" | 255,000 |
| OPT-BP1284RDE12 | OPT-BP1284RDSSE12 | 84" | 8" | 72" (M) | 6" | 3/4" | 300,000 |
| OPT-BP1296RDE12 | OPT-BP1296RDSSE12 | 96" | 8" | 84" (M) | 6" | 3/4" | 350,000 |

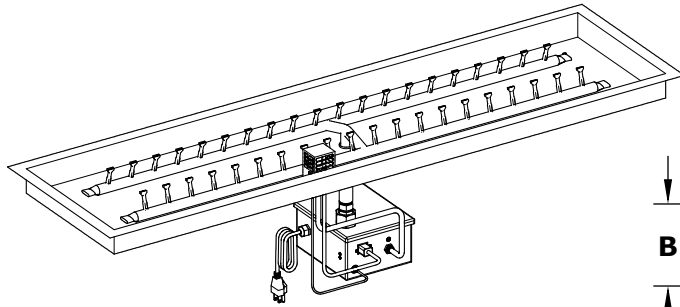
Pan Material: Aluminum
Burner Material: Brass / Stainless Steel
Ignition Type: 12V Electronic Ignition
(12V Transformer Included)

 **12V ELECTRONIC IGNITION**
ANSI Z21.97-(2017) / CSA 2.41-(2017)

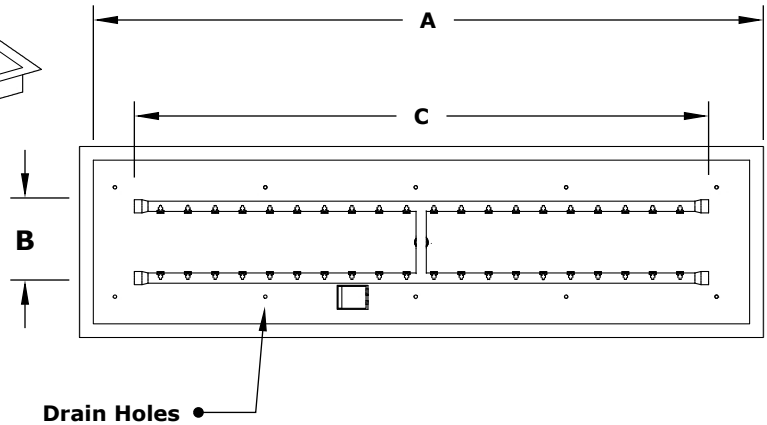
Includes: Pan, Burner, Electronic Valve,
Pilot Igniter, 12V Transformer.

M = Manifold

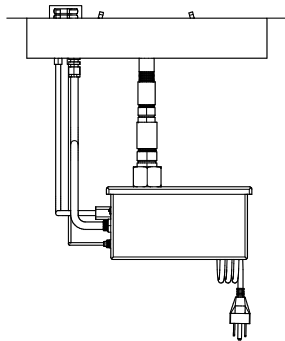
RECTANGULAR DROP IN PAN & H BULLET BURNER 110V ELECTRONIC IGNITION



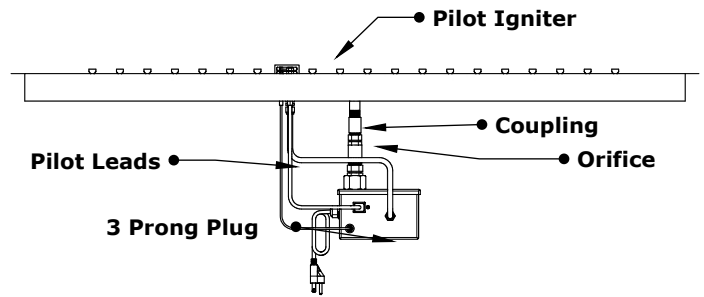
ISOMETRIC VIEW



TOP VIEW



RIGHT SIDE VIEW



FRONT SIDE VIEW

| Brass | Stainless Steel | A | B | C | D | INLET | BTU |
|------------------|--------------------|-----|----|---------|----|-------|---------|
| OPT-BP1224RDE110 | OPT-BP1224RDSSE110 | 24" | 8" | 18" | 6" | 1/2" | 85,000 |
| OPT-BP1236RDE110 | OPT-BP1236RDSSE110 | 36" | 8" | 24" | 6" | 1/2" | 110,000 |
| OPT-BP1248RDE110 | OPT-BP1248RDSSE110 | 48" | 8" | 36" | 6" | 1/2" | 160,000 |
| OPT-BP1260RDE110 | OPT-BP1260RDSSE110 | 60" | 8" | 48" | 6" | 1/2" | 205,000 |
| OPT-BP1272RDE110 | OPT-BP1272RDSSE110 | 72" | 8" | 60" (M) | 6" | 3/4" | 255,000 |
| OPT-BP1284RDE110 | OPT-BP1284RDSSE110 | 84" | 8" | 72" (M) | 6" | 3/4" | 300,000 |
| OPT-BP1296RDE110 | OPT-BP1296RDSSE110 | 96" | 8" | 84" (M) | 6" | 3/4" | 350,000 |

Pan Material: Aluminum
 Burner Material: Brass / Stainless Steel
 Ignition Type: 110V Electronic Ignition
 (110V Transformer Included)

 **110V ELECTRONIC IGNITION**
 ANSI Z21.97-(2017) / CSA 2.41-(2017)

Includes: Pan, Burner, Electronic Valve,
 Pilot Igniter, 110V Transformer.

M = Manifold