

SEAL ROCK FIRE TABLE

POWDER COAT

OPT-SEALPC36
OPT-SEALPC48
OPT-SEALPC60



Part No.	Product Name	Ignition Type	Gas Type	Finish
OPT-SEALPC36	36" Seal Rock Fire Pit	M.L FSML FSEN E12V EKIT	NG or LP	POWDER COAT
OPT-SEALPC48	48" Seal Rock Fire Pit	M.L FSML FSEN E12V EKIT	NG or LP	POWDER COAT
OPT-SEALPC60	60" Seal Rock Fire Pit	M.L FSML FSEN E12V EKIT	NG or LP	POWDER COAT

Ignition Type:

M.L. (Match Lit)

FSML (Match Lit with Flame Sense)

FSEN (Flame Sense with Spark Ignition)

E12V (Low Voltage Ignition System)

EKIT (Plug & Play Ready)

Optional Accessories

Unit	Stainless Steel Bullet Burner	Canvas Cover	Stainless Lid	Glass Wind Guard
OPT-SEALPC36	OPT-BRDSS12	OPT-SEASPC84	OPT-22SC	OPT-WG-2424
OPT-SEALPC48	OPT-BRDSS18	OPT-SEASPC84	OPT-30SC	OPT-WG-3232
OPT-SEALPC60	OPT-SEASPC84	OPT-SEASPC84	OPT-42SC	OPT-WG-4444

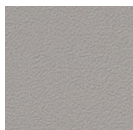
**VIEW
ONLINE**



Powder Coat
Java



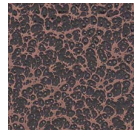
Powder Coat
Pewter



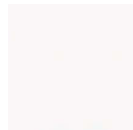
Powder Coat
Gray



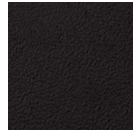
Powder Coat
Copper Vein



Powder Coat
White



Powder Coat
Black



Powder Coat
Silver Vein



**VIEW
CATALOG**



PREMIUM QUALITY FINISHES

Protective UV Coating on galvanized steel.