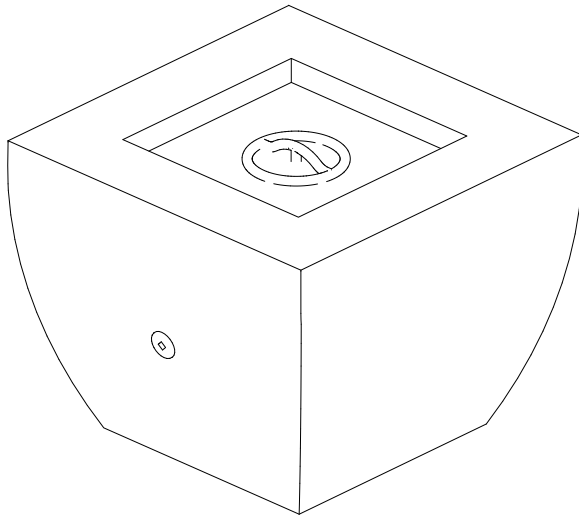
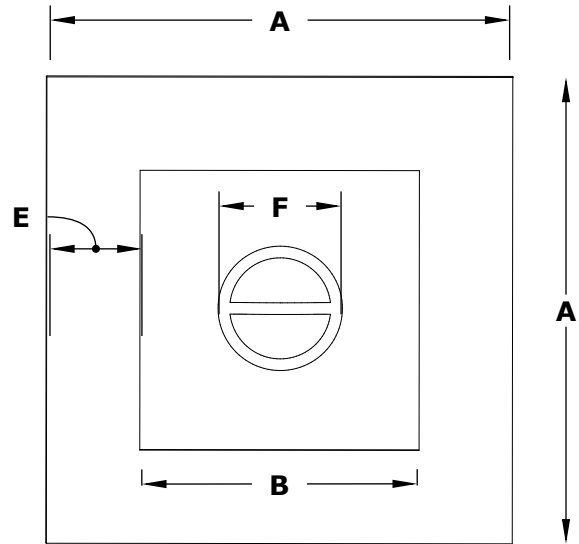


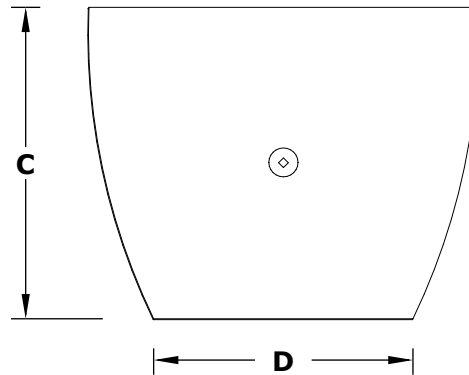
AVALON TALL FIRE PIT - METAL POWDER COAT



ISOMETRIC VIEW



TOP VIEW



FRONT SIDE VIEW

Size	Hammered Copper	Corten Steel	Stainless Steel	Powder Coat	A	B	C	D	E	BTU
30"	OPT-AVTFPCR3030	OPT-AVTFPCS3030	OPPT-AVTFPSS3030	OPT-AVTFPPC3030	30"	18"	24"	20"	6"	45,000
36"	OPT-AVTFPCR3636	OPT-AVTFPCS3636	OPT-AVTFPSS3636	OPT-AVTFPPC3636	36"	22"	24"	24"	6"	65,000

Fire Pit Material: GFRC Concrete
 Pan Material: 304 Stainless Steel
 Burner Material: 304 Stainless Steel
 Ignition Type: Match Lit or Electronic

Standard 2" Depth on all pans
110V ELECTRONIC IGNITION
 ANSI Z21.97-(2017) / CSA 2.41-(2017)



Includes: Pan, Burner, NG or LP orifice, Whistle Free Hose, Black Lava Rock.