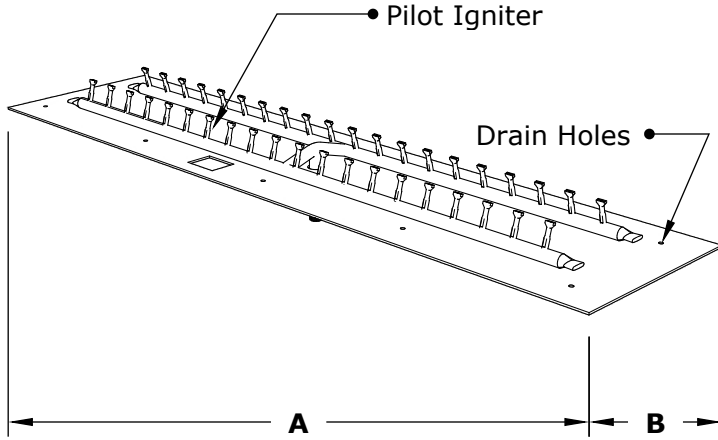
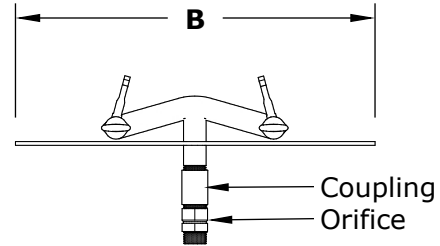


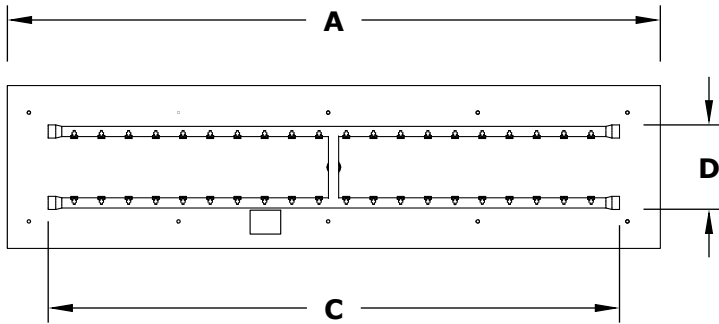
# RECTANGULAR FLAT PAN & BULLET BURNER [LOW VOLTAGE] COMPLETE PAVER KITS



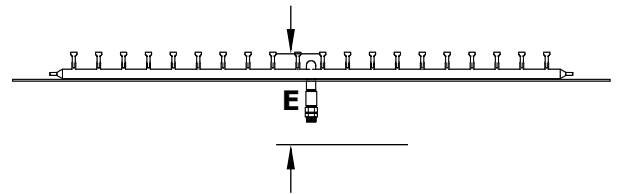
ISOMETRIC VIEW



RIGHT SIDE VIEW



TOP VIEW



FRONT SIDE VIEW

SKU	A	B	C	D	E	BTU
OPT-BRECTKT1224E12	24"	12"	18"	6"	10"	80,000
OPT- BRECTKT1832E12	32"	18"	24"	8"	10"	100,000
OPT-BRECTKT2436E12	36"	24"	30"	12"	10"	140,000

**Pan Material:** 304 Stainless Steel Burner  
**Material:** 304 Stainless Steel  
**Ignition Type:** Low Voltage

**Includes:** Fire Pan, Bullet Burner, Low Voltage Ignition System, Orifice, Fittings, Flex Line, Key Valve, Key, Paver Bracket, Vents, 24" Z-Mounting Brackets