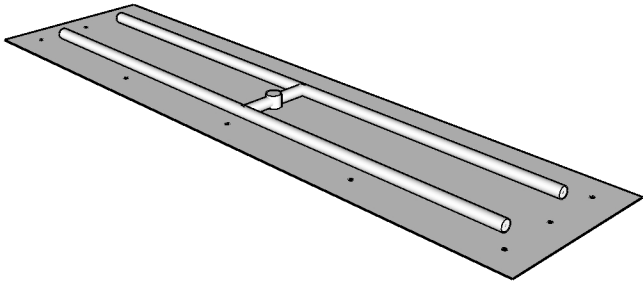


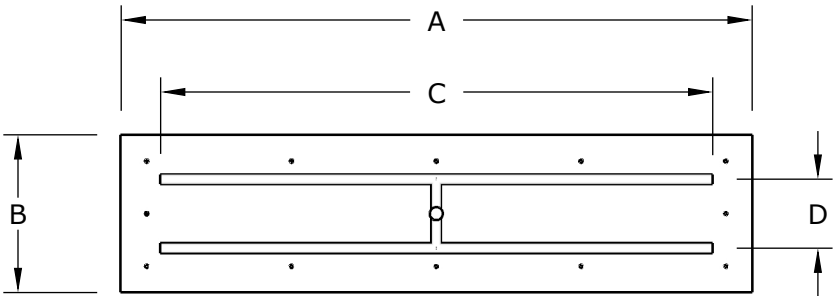
**RECTANGULAR FLAT PAN & BURNER [Low Voltage]
COMPLETE PAVER KIT**



ISOMETRIC VIEW



FRONT VIEW



TOP VIEW

SKU	A	B	C	D	BTU
OPT-RECTKT1224E12	24"	12"	18"	6"	80,000
OPT-RECTKT1832E12	32"	18"	24"	8"	100,000
OPT-RECTKT2436E12	36"	24"	30"	12"	140,000

PAN MATERIAL: 304 Stainless Steel
BURNER MATERIAL: 304 Stainless Steel
IGNITION TYPE: Low Voltage

Includes: Fire Pan, SS Burner, Low Voltage Ignition System, Orifice, Fitting, Flex Line, Key Valve, Paver Bracket, Vents, 24" Z-Mounting Bracket

Certification:



Proprietary & Confidential: The information contained in this drawing is the sole property of **The Outdoor Plus**. Any reproduction or as a whole without written permission of **The Outdoor Plus** is prohibited.