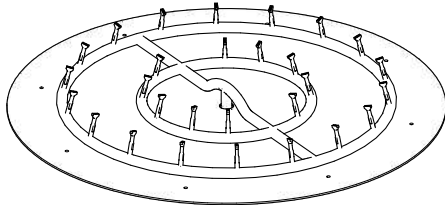
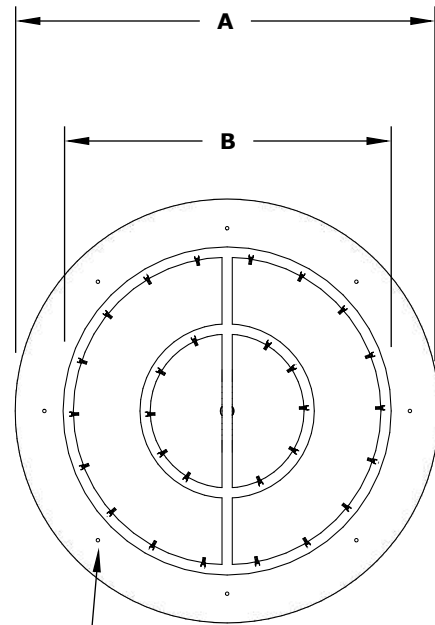


ROUND PAN AND BULLET BURNER [FIRE GLOW] COMPLETE PAVER KITS

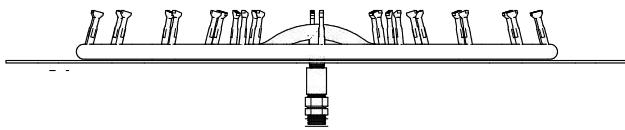


ISOMETRIC VIEW

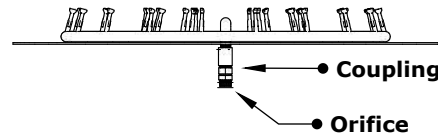


Drain Holes ●

TOP VIEW



RIGHT SIDE VIEW



FRONT SIDE VIEW

Stainless Steel	A	B	INLET	BTU
OPT-BRKT18FG	18"	12" (1R)	1/2"	70,000
OPT-BRKT242FG	24"	12" (2R)	1/2"	70,000
OPT-BRKT24FG	24"	18" (2R)	1/2"	110,000
OPT-BRKT282FG	28"	18" (2R)	1/2"	110,000
OPT-BRKT28FG	28"	24" (2R)	1/2"	145,000
OPT-BRKT29FG	29"	24" (2R)	1/2"	145,000
OPT-BRKT30FG	30"	24" (2R)	1/2"	145,000
OPT-BRKT36FG	36"	30" (3R)	3/4"	180,000
OPT-BRKT39FG	39"	30" (3R)	3/4"	180,000

Pan Material: Aluminum
Burner Material: Brass / Stainless Steel
Ignition Type: Fire Glow

Includes: Fire Pan, Bullet Burner, Fire Glow Ignition System, Orifice, Fittings, Flex Line, Key Valve, Key, Paver Bracket, Vents, 24" Z-Mounting Brackets

R= Ring M = Manifold