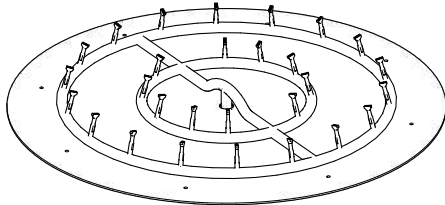
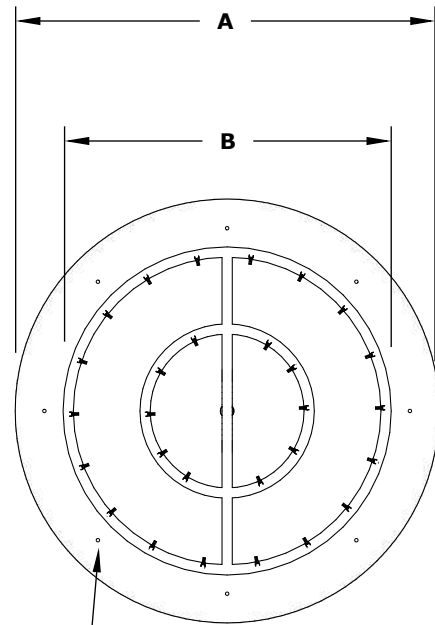


ROUND PAN AND BULLET BURNER [MATCH LIT] COMPLETE PAVER KIT

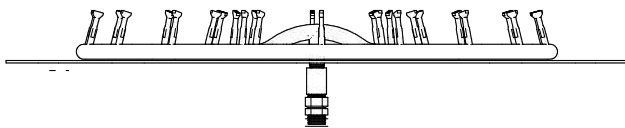


ISOMETRIC VIEW

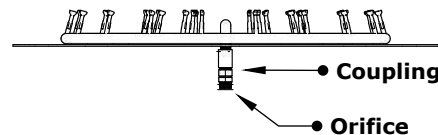


Drain Holes ●

TOP VIEW



RIGHT SIDE VIEW



FRONT SIDE VIEW

Stainless Steel	A	B	INLET	BTU
OPT-BRKT18	18"	12" (1R)	1/2"	70,000
OPT-BRKT242	24"	12" (2R)	1/2"	70,000
OPT-BRKT24	24"	18" (2R)	1/2"	110,000
OPT-BRKT282	28"	18" (2R)	1/2"	110,000
OPT-BRKT28	28"	24" (2R)	1/2"	145,000
OPT-BRKT29	29"	24" (2R)	1/2"	145,000
OPT-BRKT30	30"	24" (2R)	1/2"	145,000
OPT-BRKT36	36"	30" (3R)	3/4"	180,000
OPT-BRKT39	39"	30" (3R)	3/4"	180,000

Pan Material: Aluminum
Burner Material: Brass / Stainless Steel
Ignition Type: Match Lit

Includes: Pan, Burner, Key Valve, Vents,
Flex Hoses, Z-Brackets

R= Ring M = Manifold