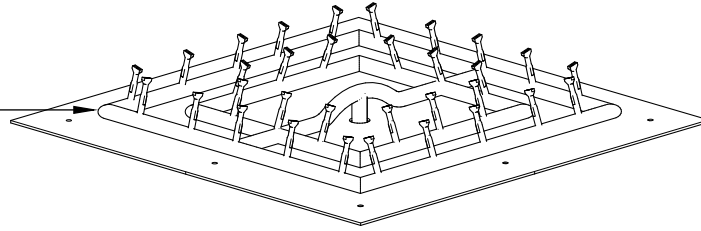


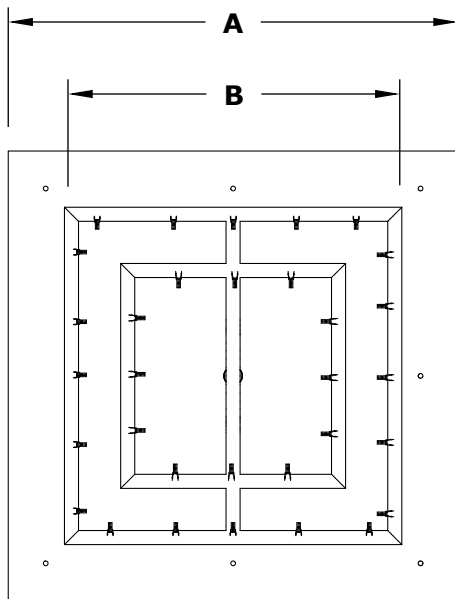
SQUARE FLAT PAN & BULLET BURNER [PLUG & PLAY] COMPLETE PAVER KIT



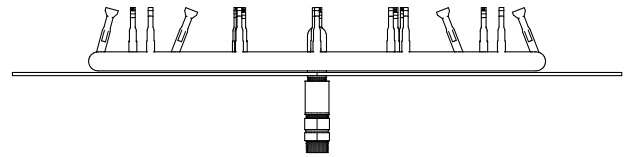
NOTICE: The image depicted is equipped with 2 Burners. We also offer this model in a 3 Burner configuration.



ISOMETRIC VIEW



TOP VIEW



FRONT VIEW

PART NUMBERS	A	B	INLET	BTU
OPT-BSKT18E110	18"	12" (2B)	1/2"	70,000
OPT-BSKT24E110	24"	12" (2B)	1/2"	70,000
OPT-BSKT24E110	24"	18" (2B)	1/2"	110,000
OPT-BSKT28E110	28"	18" (2B)	1/2"	110,000
OPT-BSKT28E110	28"	24" (2B)	1/2"	145,000
OPT-BSKT29E110	29"	24" (2B)	1/2"	145,000
OPT-BSKT30E110	30"	24" (2B)	1/2"	145,000
OPT-BSKT36E110	36"	30" (3B)	3/4"	420,000
OPT-BSKT39E110	39"	30" (3B)	3/4"	420,000

2B = 2 Burners
3B = 3 Burners

PAN MATERIAL: 304 Stainless Steel
BURNER MATERIAL: Brass/Stainless Steel
IGNITION TYPE: Plug & Play

Includes: Fire Pan, Bullet Burner, Plug & Play Ignition System, Orifice, Fitting, Flex Line, Key Valve, Paver Bracket, Vents, 24" Z-Mounting Bracket

Certification:

