

# PORTABLE ELECTRONIC REMOTE

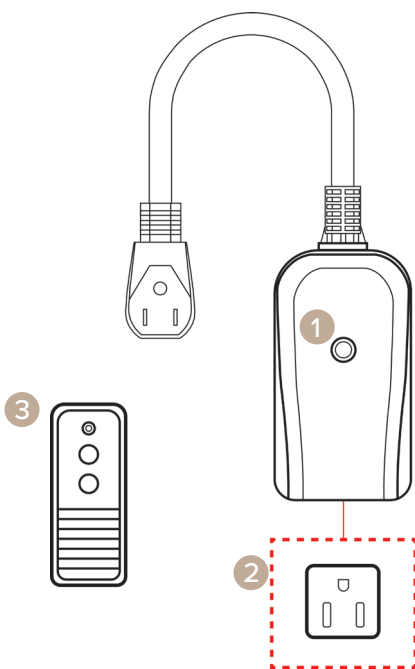


OPT-ODPER

## USER GUIDE

Control your outdoor features effortlessly with The Outdoor Plus' Portable Electronic Remote. With a durable, weatherproof design and an extensive range, the Portable Remote brings convenience and energy efficiency to your fingertips.

### PRODUCT DESCRIPTION



#### 1. POWER INDICATOR LIGHT:

Shows when the receiver is powered on.

#### 2. OUTLET:

Conveniently located at the bottom of the receiver for easy device connection.

#### 3. REMOTE CONTROL:

**ON Button:** Overrides the receiver's current program, turning devices on.

**OFF Button:** Overrides the receiver's current program, turning devices off.

**Remote Indicator Light:** LED indicator shows when ON or OFF buttons are pressed.

## SAFETY

---

### FEDERAL COMMUNICATIONS COMMISSION INTERFERENCE

This equipment has been tested and found to comply with the limits for Class B digital device, pursuant to part 15 of the FCC Rules. These limits are designed to provide reasonable protection against harmful interference in a residential installation. This equipment generates, uses, and can radiate radio frequency energy and, if not installed and used in accordance with the instructions, may cause harmful interference to radio or television reception, which can be determined by turning the equipment off and on, the user is encouraged to try to correct the interference by one or more of the following measures:

- Reorient or relocate the receiving antenna.
- Increase the separation between the equipment and the receiver.
- Connect the equipment into an outlet on a circuit different from that to which the receiver is connected.
- Consult the dealer or an experienced radio/TV technician for help.

## SPECIFICATIONS

---

### PART NUMBER OPT-ODPER

Color	Black
Switch Function	Single Pole
General Use	125 VAC, 60 Hz, 13 A
Resistive	125 VAC, 60 Hz, 13 A
Tungsten	125 VAC, 1000 W
Electronic Ballast	125 VAC, 500 VA
Motor (1/2 hp)	120 VAC, 60 Hz, 8.3 A

**FCC Caution:** Any changes or modifications not expressly approved by the party responsible for compliance could void the user's authority to operate this equipment

# INSTALLATION INSTRUCTIONS

---

## INSTALLING THE REMOTE OUTDOORS



### **WARNING**

The device must be mounted in a vertical position with the receptacle facing downward and with the receptacle at least 2 ft. above the ground level to prevent water immersion.

- Hang the receiver from the slot on the back onto a wall near a grounded electrical outlet.
- Use a nail or screw (not included) inserted into the mounting surface, ensuring it extends at least 3/16 inches from the wall.
- Plug the device cord into the receptacle at the bottom of the receiver for easy connection.

# OPERATING INSTRUCTIONS

---

## USING THE REMOTE CONTROL

- Insert the battery with the positive side (+) facing up, as shown inside the battery compartment.
- **Never throw batteries into a fire. Do not expose batteries to fire or other heat sources.**
- The battery contains mercury. Please recycle or dispose of it as hazardous waste; do not throw it in the trash.

## REPLACING THE BATTERY

1. Slide off the battery compartment cover away from the remote.
2. Replace the old battery with a new Type 3V (CR2032) lithium battery.
3. Ensure proper installation with the positive (+) side facing up.
4. Slide the battery compartment cover back into place.
5. Always choose the correct size and grade of battery for optimal performance.

## TROUBLESHOOTING

---



### WARNING

Do not ingest the battery. This product includes a coin/button cell battery. Swallowing the battery can cause severe internal burns within 2 hours and may be fatal. Keep batteries away from children, and if the battery compartment doesn't close securely, discontinue use and keep it out of reach of children. Seek medical help immediately if you suspect a battery has been swallowed or inserted into the body.

Problem	Solution
The feature does not turn on and off via remote control.	Confirm remote operation after replacing the batteries.
The feature does not turn on, even when the power indicator light indicates that the receiver is on.	Ensure the feature is working by plugging it directly into an outlet.
	Be sure that the feature is in the "ON" position if it has its own switch.
	Ensure the outlet powering the receiver is active.